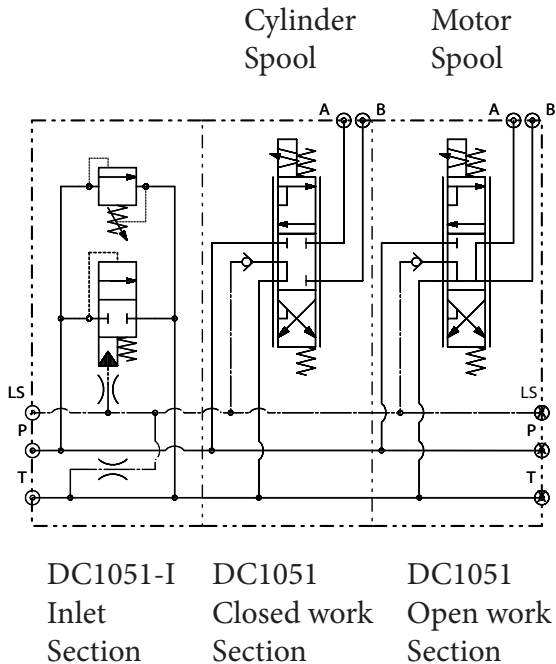


Description:

This inlet is designed to work with DC1051 work section. Inlet is configurable for open center or load sense applications. Two bottom and two side holes for mounting and four threaded holes used for connecting to the work sections. Top gauge port is standard.

Features:

- Inlet unloader option for open center
- Inlet plug option for closed center
- Differential area relief valve
- Flow matching spring ranges
- Integrated load sense bleed down
- Zinc plated exposed steel parts
- Anodized aluminum body for corrosion protection
- Standard relief setting 3000 psi



Specifications:

Maximum Pressure	3,000 PSI (207 BAR)
Maximum Inlet Flow	14 GPM (53 LPM)
Port Size	SAE-08
Bleed Down Size	0.020 (0.5 MM)
Body Material	Aluminum
Cartridge Material	Steel
Filtration	ISO 4406
Fluids	Mineral based or Synthetics 50-2000 SUS
Approx. Weight	1.5 lbs.

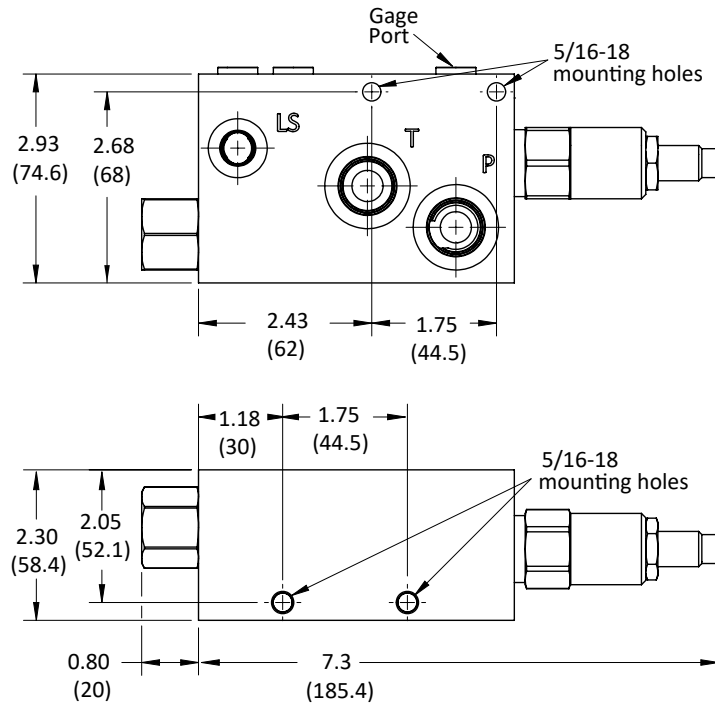
The data and application materials contained herein are furnished for information only and believed to be reliable. Questions regarding specific applications or performance should be directed to JEM's application department. Since our products are being continuously improved, data contained herein is subject to change without notice. Warranty on FastLine products is 1 year from the date of sale.

JEM Technical
(888) 256-8266
jemtechnical.com



JEM Technical Ltd.
(204) 654-1743
jemtechnical.ca

Installation Dimensions:



() Parentheses = Millimeters

How To Order:

 Example model code is the in-stock FastLine solution

DC1051- I - UL110 - RV - BD _ 35 / 25

<p>Base Part No.</p> <p>Section Type I = Inlet</p> <p>Unloader Valve UL000 = No Unloader UL080 = 80 PSI unloader UL110 = 110 PSI unloader * UL160 = 160 PSI unloader UL230 = 230 PSI unloader</p> <p>Note: Unloader PSI guide for work section flow UL080 = 4.5 GPM (17 LPM) UL110 = 5.0 GPM (19 LPM) UL160 = 6.0 GPM (22 LPM) UL230 = 6.2 GPM (23 LPM)</p>	<p>Relief Option NR = No relief RV = Relief *</p> <p>Note: Relief rated to 8 GPM max.</p> <p>Load Sense Bleed Down NB= No Bleed Down BD = with Bleed Down *</p>	<p>Relief Setting = PSI ÷ 100 Std adjustment range 250-3600 PSI</p> <p>Adjustment Range 13 = 150-1300 PSI 35 = 250-3500 PSI *</p>
<p>Seal Type Omit = Buna N V= Fluorocarbon **</p>		

* Indicates the standard offering.
** Fluorocarbon seals are recommended when temperatures exceed 212° F (100° C).
Non standard selections may delay the shipping of the assembly.